



Basso.

5 pizz. p

arco pp

un poco riten.

attacca

N° 2. Tibi omnes.

Andantino. (♩=50) 14 6 3 pizz. 5 5

Org. mf mf

arco 7 22 23 24

mf p Vel. mf cresc. ff

ten. 8 16 4 9 8 pizz. 11 arco

p mf f

ten. 10 11

ff mf f

12 pizz. 1 arco

f f

11

Un poco riten.

12 4 4 p



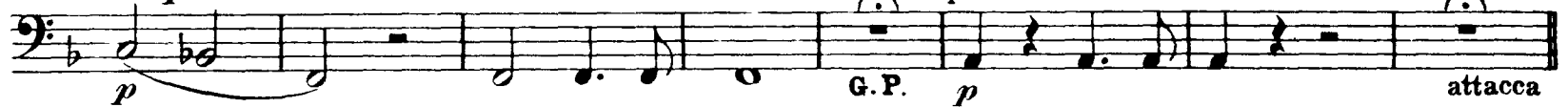
N°3. Praeludium.

Allegretto. Un poco più animato che il Te Deum.



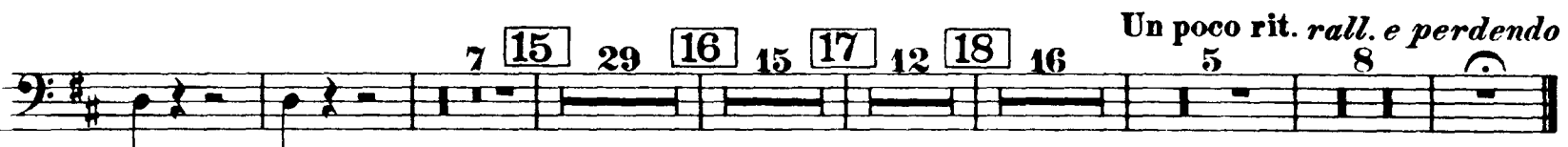
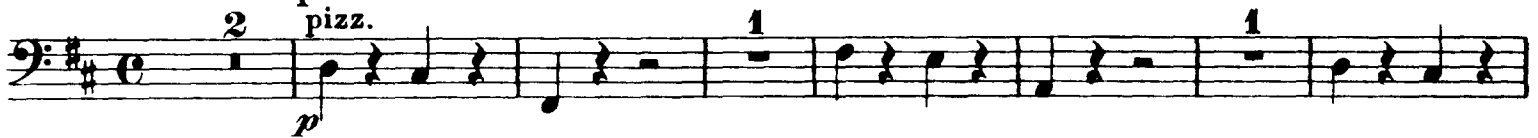
*un poco riten.*

*Silence.* *pizz.*



N°4. Dignare.

Moderato quasi andantino. (♩ = 69)



N°5. Christe, rex gloriae.

Allegro non troppo. (♩ = 76)



Berlioz — Te Deum

Orchestra Musician's  
CD-ROM LIBRARY

Basso.

pizz. 1 1 1 1

arco sf

20

Poco riten. 18 riten. 4 poco rall. 1 2 3 4 21 Tempo I. (un poco animato) p pizz. mf

Vel.

arco p mf

pizz.

arco 22 sf

23 sf

sf

p

cresc. sempre cresc.

24 ff

Measures 21-24 of the Bassoon part. The music is in G major (one sharp) and 3/4 time. It features a melodic line with various dynamics including *f* and *mf*, and includes slurs and accents.

N° 6. Te ergo quaesumus.

Andantino quasi adagio. (♩ = 50)

Measures 25-30 of the Bassoon part. The music is in G major and 3/4 time. It includes various dynamics such as *p*, *f*, *dim.*, *pp*, and *ppp*. Performance instructions include *arco*, *pizz.*, and *riten.*. Measure numbers 11, 13, 16, 17, 26, 27, 28, 29, and 30 are indicated in boxes. The tempo changes to *Tempo I.* at measure 29.

Basso.

N°7. Judex crederis.

Allegretto un poco maestoso. (♩ = 69)

7 arco *f*

*cresc.*

31 *ff*

32 *ff*

33 *dim.* *p* *ff*

34 6 10 1 2 *pp* *f*

3 4 5 6 7 8 9 10

35 2 *pizz.* *p*

36 2

*p*

*cresc. poco a poco*

arco

*mf cresc. molto* *f*

37

*ff* *ff*

*ff*

38

*mf cresc.*

39

*f* *ff* *dim. - - pp*

*un poco rall.*

Detailed description: This page contains the musical score for the Bassoon part of Berlioz's Te Deum, measures 36 through 39. The score is written in bass clef with a key signature of three flats (B-flat, E-flat, A-flat). Measure 36 begins with a dynamic of *p* and a tempo marking of *cresc. poco a poco*. The music features a series of eighth and sixteenth notes. Measure 37 starts with a dynamic of *ff* and includes a section marked 'arco' with a dynamic of *mf cresc. molto* leading to a fortissimo *f* dynamic. Measure 38 continues with a dynamic of *ff* and features a *mf cresc.* section. Measure 39 begins with a dynamic of *f*, moves to *ff*, and concludes with a *dim. - - pp* section and a tempo marking of *un poco rall.*

Berlioz — Te Deum

Orchestra Musician's  
CD-ROM LIBRARY

Basso.

a tempo

mf *f* *ff* *dim.* *p* *ff*

40 *tenuto*

41 *ff*

*un poco riten.* Tempo I.

*fff*

N° 8. Marcia.

Allegro non troppo. (♩ = 92)

9 8 6 42 *f*

2 2 *f*

9 8 *f tenuto*



This page contains the musical score for the Bassoon part in Berlioz's Te Deum, covering measures 44 to 46. The score is written in bass clef with a key signature of two flats (B-flat and E-flat). It begins with a dynamic marking of *ff* (fortissimo) and includes a first ending bracket over measures 44 and 45. Measure 45 features an accent (^) over the first note and a triplet of eighth notes. Measure 46 starts with a boxed measure number '46' and continues with a melodic line. The score concludes with a double bar line and repeat dots.